



Securing a Mobile Enterprise
June 6th, 2007

Ultra
Mobility

Is Your Network Secure?

- Large networks have thousands of security devices
- No central control creates security holes
- Unsynchronized security cannot quickly adapt
- You may not know what security measures are really in place
- Enterprises need seamless security

Is Your Network Mobile?

- Mobile networks are always changing, compounding the security problem
- Mobile devices operate outside the traditional IT boundaries
- Devices are constantly entering and leaving the network

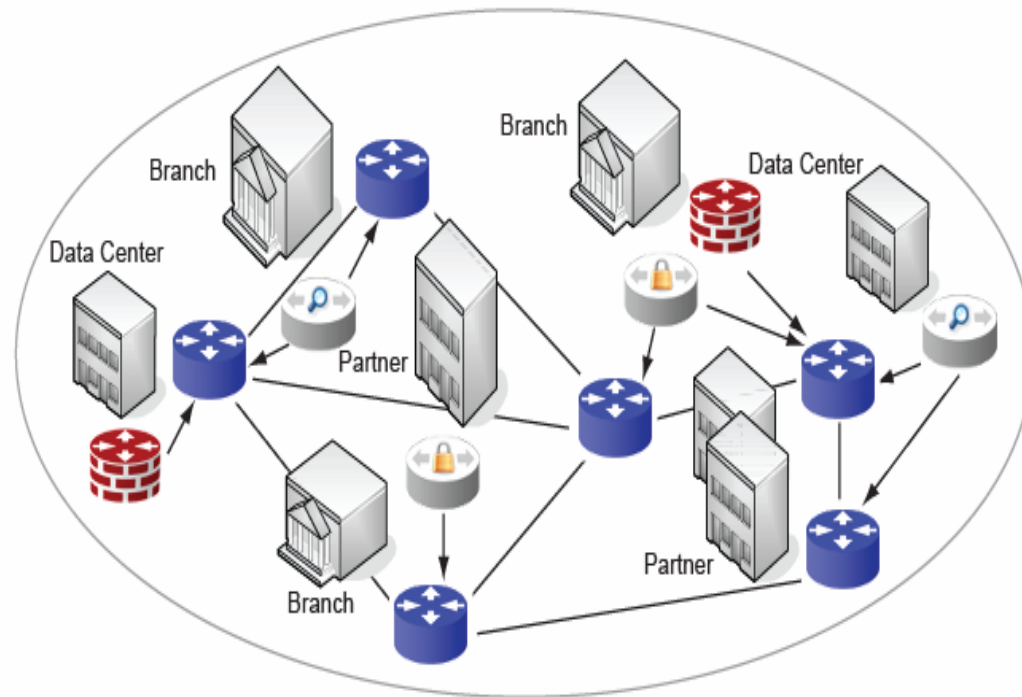
A Management Challenge

Analysis: Too much meaningless raw data

Monitoring: Need to monitor multi-vendor networks

Mitigation: How to use network to eliminate threats

Configuration: How to rapidly deploy new policies



Start with a Policy

- Organizational rules govern company practices
- Security policies are those organizational rules applied to security
- Regulations, business needs, and consumer privacy drive security policies

Put Policy in the Network

- Effective security policy management must start in the network infrastructure
- Policies must be translated to be understood by network security devices
- Security policies must be implemented seamlessly and consistently
- Policy implementation must be monitored constantly

Policy-Driven Security...

- Aligns network security with organizational security policies
- Systematically protects the business, employees, customers, and partners

Policy Creation...

Approval...

Implementation...

Manage from the Center

- Centrally control security policies
- Seamlessly secure the entire network, including mobile devices
- Quickly reconfigure security to adapt to threats
- Change network infrastructure without compromising policy or security

For Better Security

